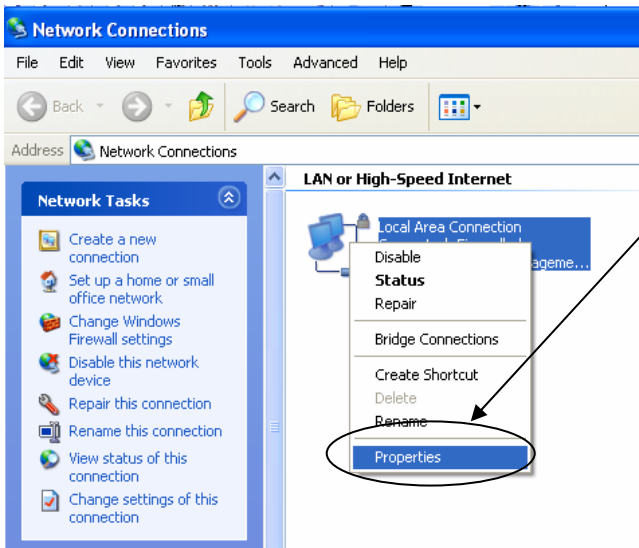


## Setting Alternate Static IP Address for Network Connection

If you move your computer from being connected from a LAN using DHCP to your ID-1 or other equipment that uses a static IP address, you can set your computer up to automatically switch to the static IP address. The use of the static IP address occurs when the computer cannot find a DHCP server such as when it is connected to your ID-1.

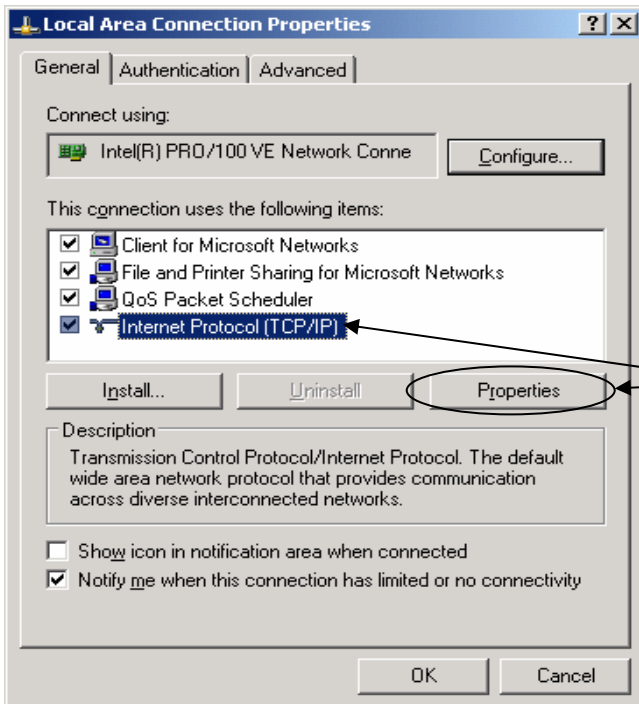
To set up your computer, follow these steps.

Go to: Start  
Settings  
Network Connections



Right click on the “Local Area Connection” icon and select “Properties”

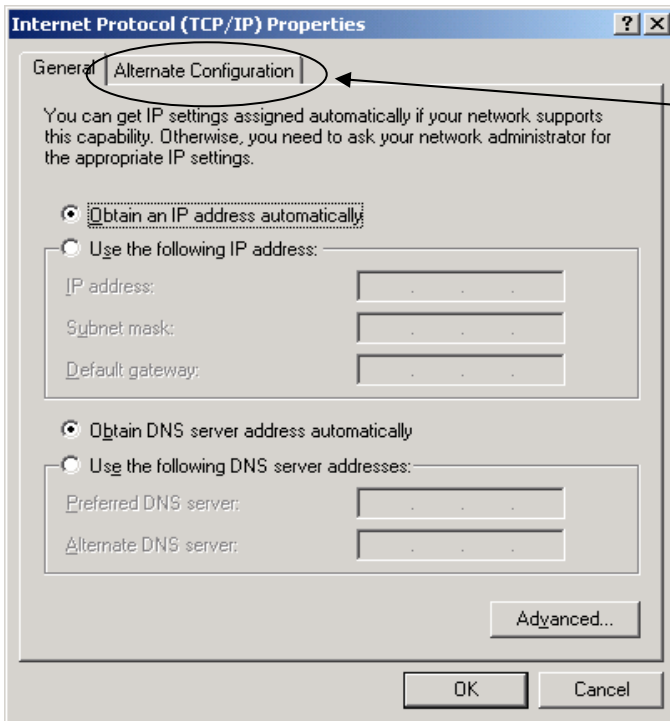
You should see the following screen:



Click on “Internet Protocol” and then on “Properties”

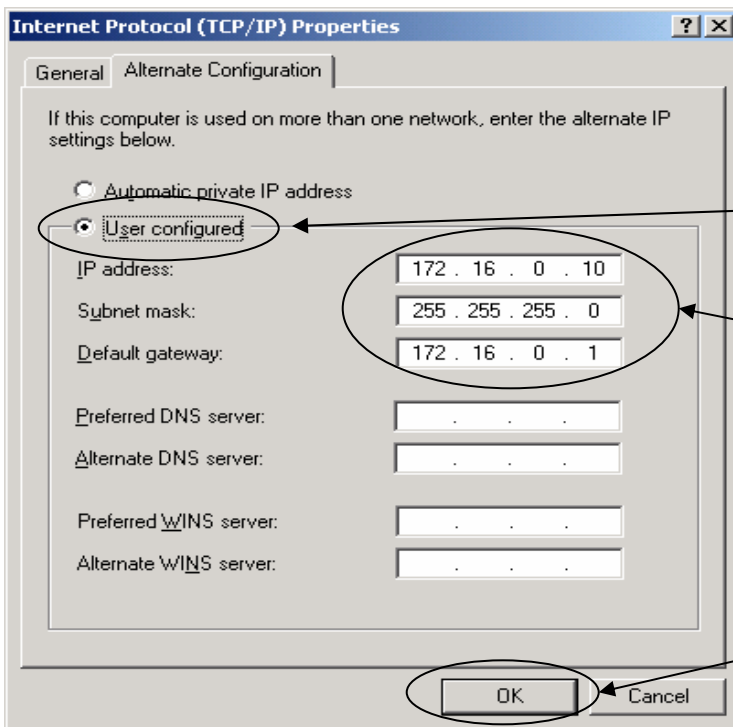
## Setting Alternate Static IP Address for Network Connection

You should see the “Internet Protocol (TCP/IP) Properties” window.



Click on the “Alternate Configuration” Tab

The alternate tab will be displayed with “Automatic private IP address” selected.



Click the “User configured” radio button

Enter the IP address information selected for your computer

Select “OK”

For use with the ICOM equipment, it is recommended that you use a 172.16.0.X address with X in the range of 50-254. Your computer will use this address if a DHCP server is not available.