

Missouri Digital Group - Linking Information

Linking

Linking "connects" a module on the KØMDG system to a module on another D-Star system or a reflector. The linking is done between the Gateways and is via the internet. The software that provides for "Linking" is D-Plus by Robin Cutshaw, AA4RC.

When a module is linked, everyone uses a normal "CQCQCQ operation" with the Gateway in RPT2. All audio is routed to the linked system or reflector. Once linked, no special radio programming is required except to have the Gateway, "KØMDG G" in the RPT2 position.

Allowed Linking

Linking is allowed on 2m, 70 cm and 23 cm, modules "C", "B" and "A"

Terminal Setup

You must have your terminal setup in order to "link" a module. If not, linking will not work as you are not in the database in the Gateway.

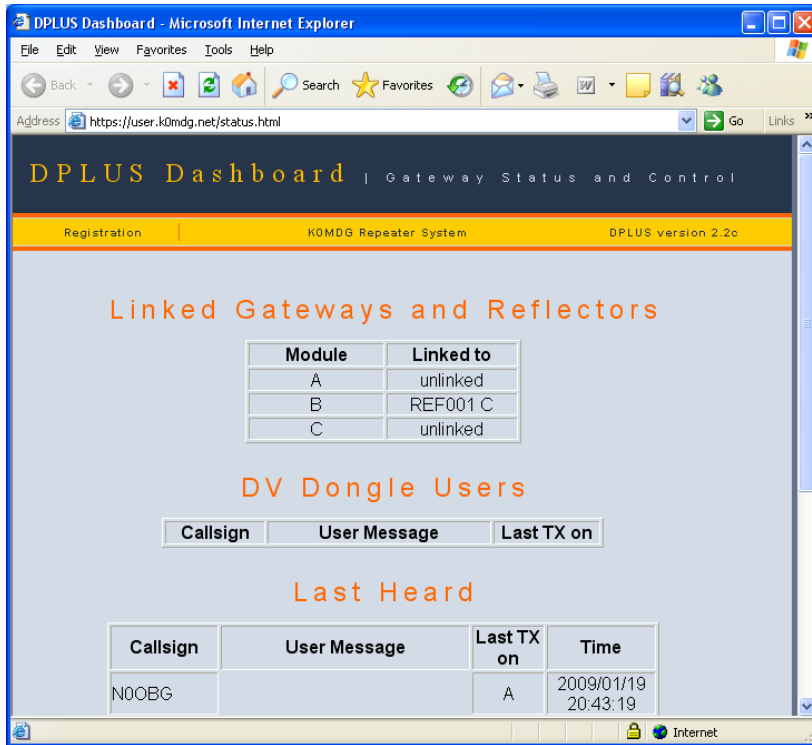
You should have set up your terminal as part of your registration on the Gateway. If you haven't, log back on to your Gateway account and follow our instructions, starting with Step 13. You can find the instructions on our web site. The link to the document is:

http://www.modigitalgroup.org/images/MDG_GW_Registration_Instr_20081108.pdf

Linking Status

To check linking status of the KØMDG system, go to <https://user.k0mdg.net/status.html>. After accepting the lack of certificate, you will see the following web page:

Missouri Digital Group - Linking Information



The module and what it is "Linked to" is displayed. Also current DV Dongle Users are listed.

Linking a Module

To link/unlink a module via the Gateway, you will need to program your radio "URCall" as follows:

1. "XXNYYYML" to link the current module to Gateway XXNYYY module M.
2. "REFNNNML" to link reflector NNN module M.
3. " U" to unlink a module (U is in the eighth position).

To link you will key your radio and then return to your normal mode of operation

For example:

"WØMD CL" will link KØMDG module you are on to the "C" module in Springfield, Missouri.

"REF001CL" will link the KØMDG module you are on to Reflector 1C.

Missouri Digital Group - Linking Information

Please Unlink

Currently any registered user may link a module. When you are done, please unlink the module to return that module to normal operation.

Administrator Linking

The system administrators will link the modules to Reflectors to encourage more activity. Most Reflector linking by the administrators will be done on the "B" module. The most common link will be REF001C.

Reflectors

Each reflector has "A, B and C" modules just like a D-Star system. The number of connections to a reflector is dependent upon the bandwidth available. DV Dongles can directly connect to a reflector.

Besides normal rag chewing, reflectors are also used to facilitate world wide nets.

A current list of reflectors and their use can be found at this website, <http://www.dstarinfo.com/reflectors.aspx>.

Need Help?

If you are having problems and need help, drop us an email at admin@modigitalgroup.org.